

# MONTHLY MEMBERSHIP PROGRESS REPORT

LOCATION TEXAS

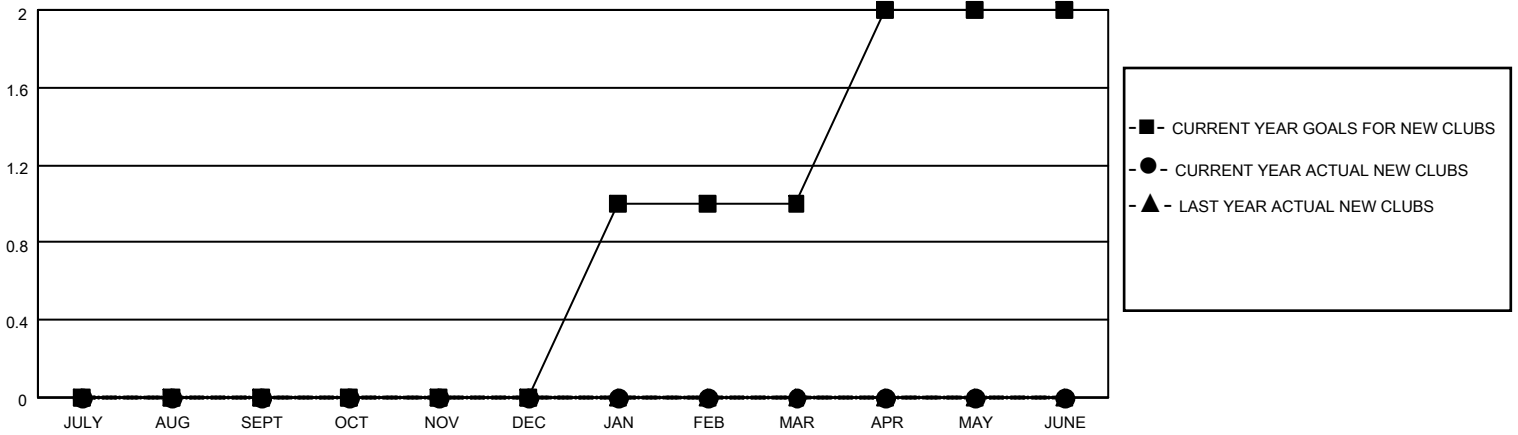
District 2 S4

Results as of: 7/31/2021

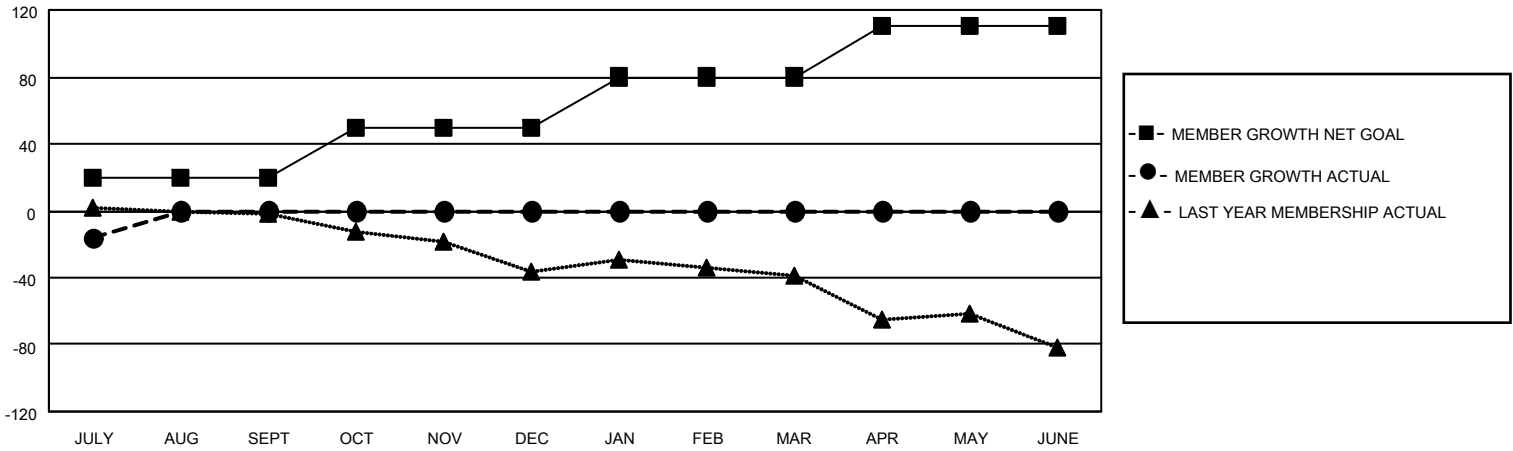
Clubs			
RESULTS FOR 2021-2022			
QUARTER	NEW CLUB GOAL	NEW CLUBS	DROPPED CLUBS
JULY/AUG/SEPT	0	0	1
OCT/NOV/DEC	0	0	0
JAN/FEB/MAR	1	0	0
APR/MAY/JUNE	1	0	0

Members			
RESULTS FOR 2021-2022			
QUARTER	MEMBER GROWTH NET GOAL	MEMBER GROWTH ACTUAL	DROPPED MEMBERS ACTUAL (including transfers)
JULY/AUG/SEPT	20	37	48
OCT/NOV/DEC	30	0	0
JAN/FEB/MAR	30	0	0
APR/MAY/JUNE	30	0	0

**GOALS AND ACTUAL NEW CLUBS CUMULATIVE**



**GOALS AND ACTUAL MEMBERS CUMULATIVE**



**DROPPED CLUBS: 1**

13 CLUBS OF 68 ADDED 1 OR MORE NEW MEMBERS

<u>GENDER DISTRIBUTION</u>	
MALE	1,054 (57.56%)
FEMALE	777 (42.44%)

<u>DROPPED MEMBERS</u>	
DECEASED	1
CLUB CANCELLED	0
OTHER	47
<b>TOTAL</b>	<b>48</b>

[CLICK HERE FOR CUMULATIVE MEMBERSHIP DATA](#)

TOTAL FAMILY UNIT MEMBERS	357
FAMILY MEMBERS PAYING HALF DUES	182